

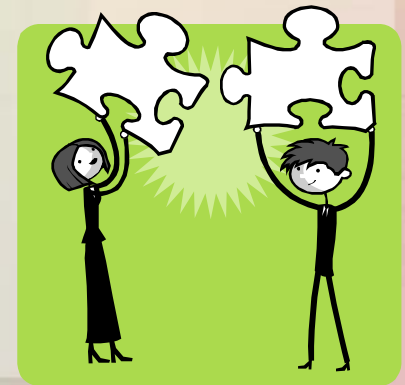
Green Infrastructure

Steering Committee
First Meeting – June 26, 2007

What is Green Infrastructure?

- An interconnected network of green space and other environmental assets that conserves the functions of the natural ecosystem and provides **associated benefits to people.** (Adapted from the Conservation Fund, Ed McMahon and Mark Benedict)

It can mean different things to different people.



First, Let's Define What It is "Not"



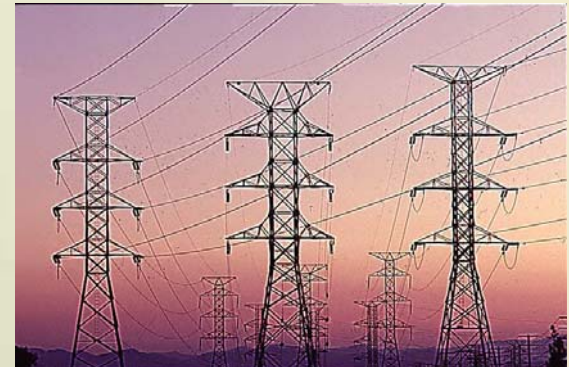
It is the opposite of "gray infrastructure" and most people have a pretty good idea of what that is.

**Elements of Gray Infrastructure
Systems Include:**

**Roadways and
Other Paved
Surfaces**



**Water Supply, Treatment
and Disposal Facilities.**

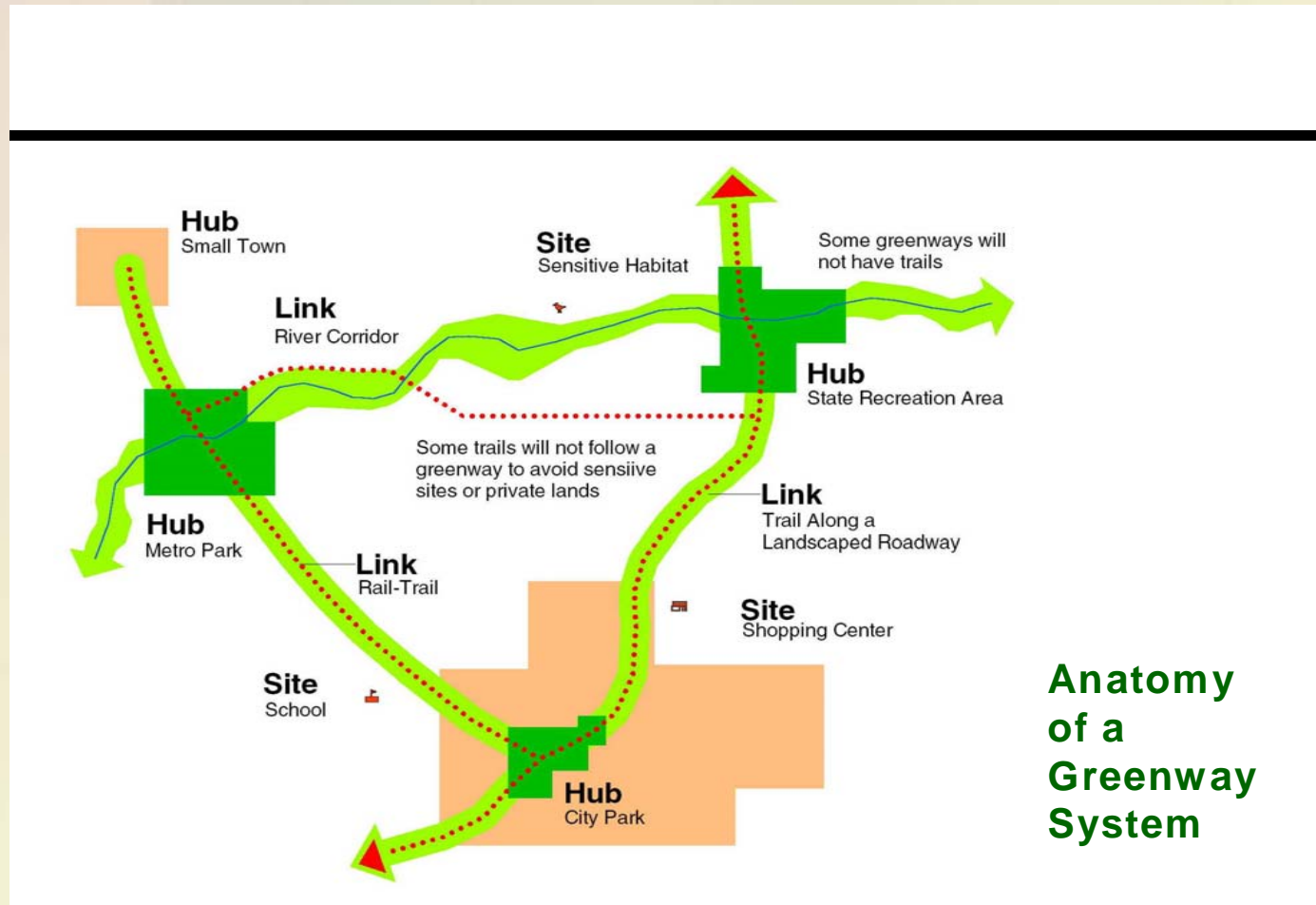


**Utilities, and
Communications**

What is Green Infrastructure?



A System of Hubs and Links





Tree planting in the urban area



Preservation of wildlife habitat



Green Infrastructure Examples

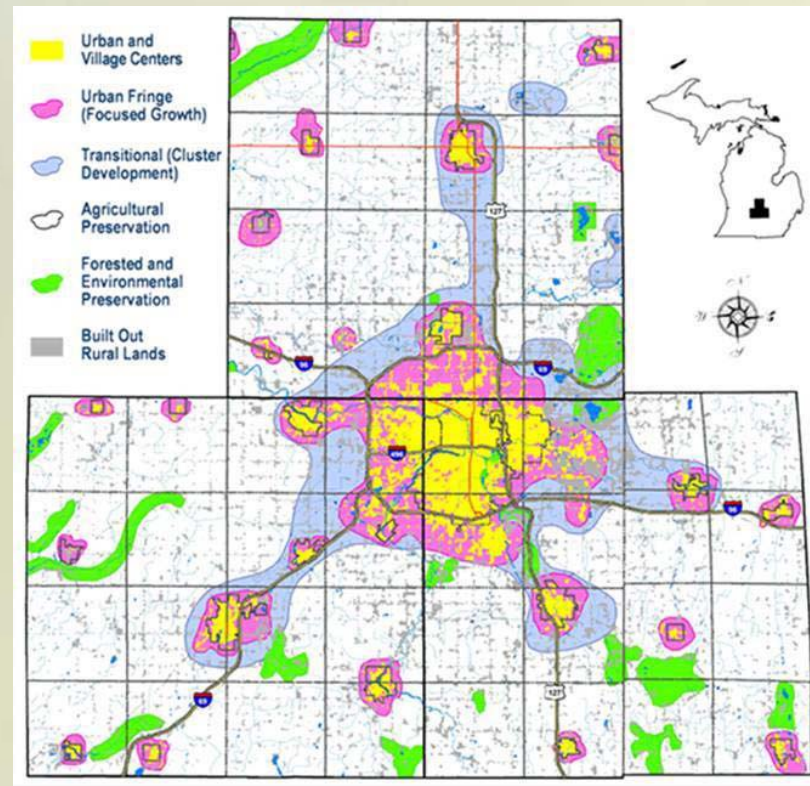
Preservation of Riverside Corridors for People and Nature



Or Natural Filtration Systems such as this Ingham County Tollgate wetland or the installation of rain gardens along Michigan Avenue



Tri-county's Green Infrastructure Planning Project Evolved From:



Tri-County Regional Growth Project
completed in 2005

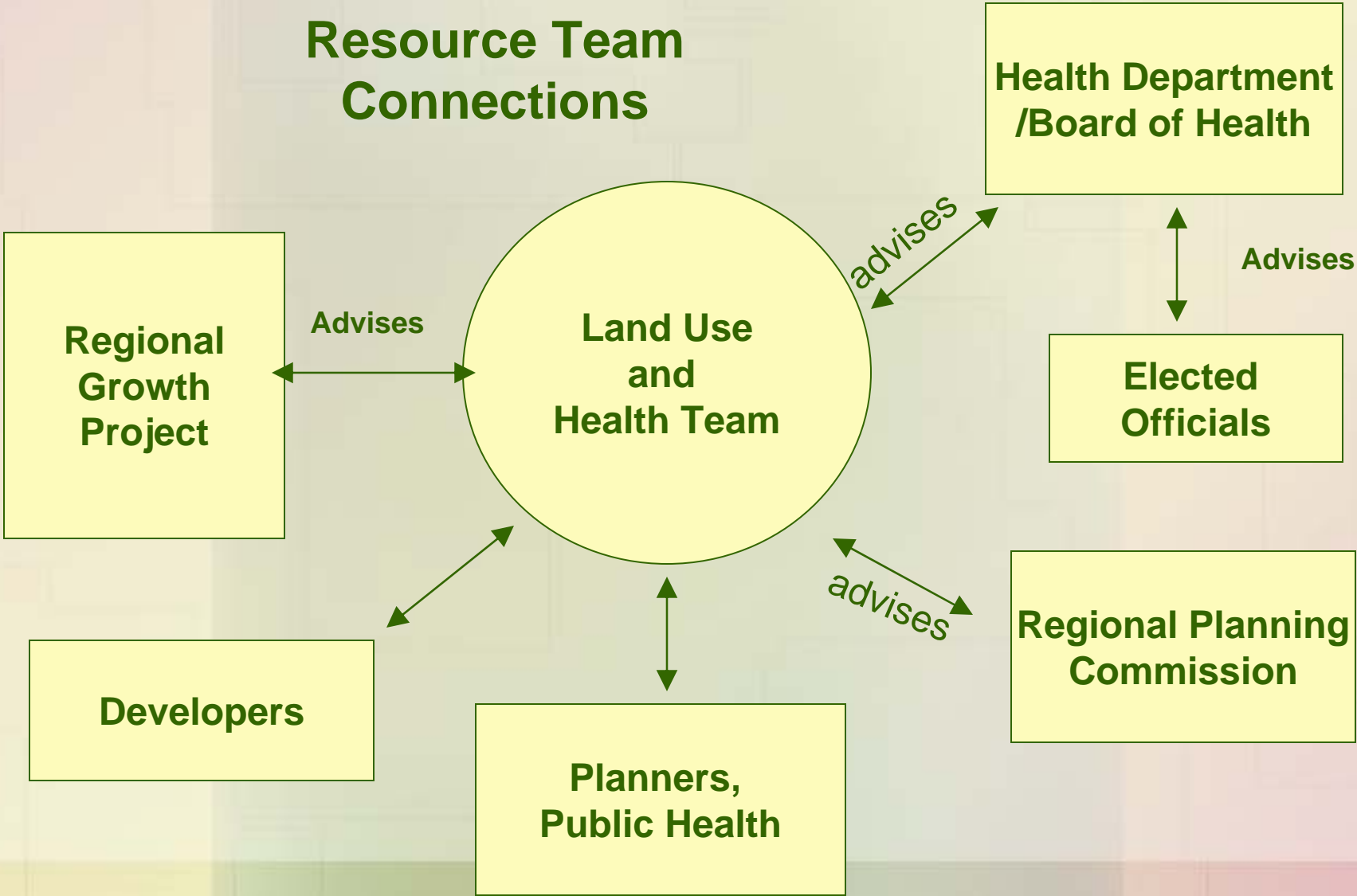
The Ingham County Land Use and Health Resource Team

- Local Public Health
- Tri-County Regional Planning Commission
- MSU Extension
- MSU Departments of:
 - Community Agriculture, Recreation and Resource Studies, Urban Planning, Criminal Justice, Land Use Policy, Remote Sensing, Urban Affairs
- City planners, architects, land developer, home builders Association.
- Non-profit Organizations

Land Use Resource Team Information Base

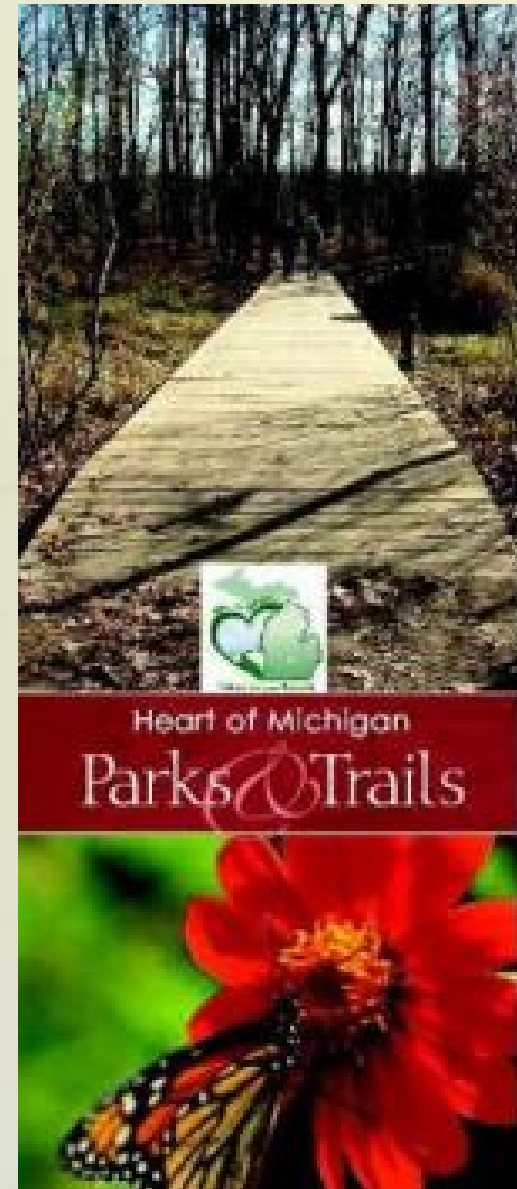
- Land use trends
- Air and water quality
- Auto and pedestrian injuries
- Health Statistics
- Social capital
- Health behavior
- Aerial photographs
- Other

Land Use & Health Resource Team Connections



And the Heart of Michigan Trails and Greenways Partnership

- 18 local jurisdictions have signed on to the partnership to create a regional trail network throughout the Tri-County Area
- A main artery to link up parks, downtowns, neighborhoods and area attractions.



All Three Groups are Concerned

**Green
Space**



TIME

How will GI be Accomplished?

- April - May → Form Steering Committee;
identify vision priorities
- June-August → GIS Data Collection
- December → Public Engagement Event;
identify “places of the heart”; share knowledge;
map connectivity
- October-Feb ‘08 → Produce GIS Map of
“collective” Green
Infrastructure Vision;
**Strategize for
Implementation**

We are the missing “Link”

- **GLS “Greenlinks”**

Genessee, Lapeer & Shiawassee is beginning implementation through technical assistance, skill-building workshops, and publications

- **West Michigan**

Grand Rapids Metro Region area

West Michigan Strategic Alliance hired a coordinator to pursue implementation of their plan

Special emphasis on economic benefits of implementing the plan

Current Status

- A \$5,000 Prosperity Team Grant was received from MSU Land Policy Institute
- Steering committee formation: Land conservancy/groundwater protection; MSU Urban Planning, Land Policy Institute, Community Extension Service; Tri-County Regional Planning; Parks and Recreation officials; Planning and Zoning administrators; Business leader; Farm Bureau;

Who Else Needs to Be at the Table?

We need your Participation and Input !

What suggestions do you have for us?

What are your comments and concerns?

Help us fit the pieces together!

